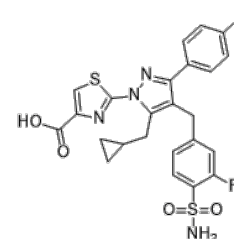


Product Name : CHK-336
Cat. No. : PC-24437
CAS No. : 2743436-86-2
Molecular Formula : C₂₄H₂₀F₂N₄O₄S₂
Molecular Weight : 530.56
Target : Lactate Dehydrogenase (LDH)
Solubility : 10 mM in DMSO



CAS: 2743436-86-2

Biological Activity

CHK-336 is a potent and selective, orally active, liver-targeted inhibitor of lactate dehydrogenase (LDH) with IC₅₀ of 0.4 nM in human enzyme assays, and IC₅₀ of 80-131 nM in cryopreserved hepatocyte assays across species.

CHK-336 demonstrated a favourable liver-distribution profile in mice, rats, and monkeys.

CHK-336 inhibited conversion of ¹³C₂-glycolate to ¹³C₂-oxalate in a dose-dependent manner in rat pharmacodynamic models.

CHK-336 produced robust and dose-dependent reductions in urinary oxalate to the normal range in primary hyperoxaluria 1 (PH1) mouse model, also induced a significant reduction in urinary oxalate in a PH2 mouse model.

References

Cox JH, et al. J Am Soc Nephrol. 2025 Apr 7. doi: 10.1681/ASN.0000000690.

J. COX, et al. Kidney International Reports. Volume 6, Issue 4, Supplement, April 2021, Page S192

Caution: Product has not been fully validated for medical applications. Lab Use Only!

E-mail: tech@probechem.com